

45 AUTO (ACP)

Test Specifications:

Firearm Used: Universal

Barrel Length: 5"

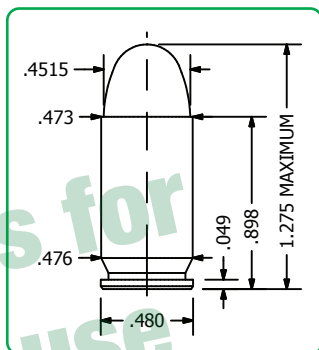
Twist: 1-16"

Components:

Case: Starline

Trim-to Length: 0.893"

Primer: WLP



Remarks:



Developed by John Browning in 1905, the 45 ACP was adopted by the U.S. military in 1911. Earning an enviable reputation for absolute reliability and dependable stopping power, the 45 remained our standard service side arm until 1985. Replaced by the 9mm Luger, the 45 ACP was dropped due to the need for NATO standardization rather than any perceived shortcomings of the bigger round. Some indication of the 45's effectiveness is the fact that several elite units (who often have considerable latitude over what types of weapons they carry) have opted to retain the 45 ACP. At this writing, the 45 continues to soldier on with Navy SEALs, Army Special Forces and Delta team, among others. Its use in law enforcement circles has also increased dramatically in the past few years.

When it was originally designed, John Browning had envisioned a 200 grain bullet at approximately 900 fps, and early production 45 ammunition was loaded to these specifications. Army Ordnance wanted a heavier bullet — specifically, a variant of the 234 grain FMJ round nose designed by Frankford Arsenal for the 45 Colt Revolver Ball Cartridge of 1909. The resulting hybrid was the 45 ACP “Hardball” load, consisting of a 230 grain FMJ at 810 fps. Handloaders, of course, have a variety of bullet weights available to them suitable for any conceivable use.



The 45 ACP is a true rimless design, headspacing on the case mouth. With its long tenure as our official pistol cartridge, the 45 ACP has received a tremendous amount of developmental work, making it one of our most thoroughly refined and accurate cartridges. During daily quality control testing in the Sierra range, 50 yard, ten shot groups of less than 1.5 inches are routine. For accuracy work, fast burning powders, such as Bullseye or Win 231, are top choices. Medium burning powders, such as Unique, Blue Dot and Accurate Arms #5, tend to give better velocities for the more potent loadings. Since it does headspace on the case mouth, we recommend nothing more than a slight taper crimp. Based on reloading die and component sales, the 45's future appears bright. It remains the darling of competitive bullseye shooters and still has a loyal following in the IPSC/USPSA community. Despite its retirement from active military duty, the 45 ACP will undoubtedly be with us for decades to come.

Special Note: There is a +P cartridge available for this cartridge. The gun must be rated for +P as well.



45 AUTO (ACP)

		Bullet Caliber Weight Type							C.O.A.L.
		#8800 .4515" 185gr. JHP							1.212"
		#8810 .4515" 185gr. FPJ Match							1.155"
Powder v	Velocity >	750	850	900	950	1000	1050	1100	
Clays			4.9	5.2	5.5	5.8			
Bullseye			5.0	5.4	5.8	6.2			
Target				5.3	5.6	6.0	6.4	6.8	
Tite Group			4.9	5.3	5.6	6.0			
American Select		4.8	5.4	5.7	6.0	6.3			
WST		4.7	5.3	5.6	6.0				
N320		5.2	5.7	6.0	6.3	6.6			
A#2			5.3	5.6	6.0	6.3			
Zip			6.2	6.6	6.9	7.2	7.5		
Win 231			5.7	6.1	6.5	6.9	7.2		
Unique			6.0	6.4	6.7	7.1	7.5		
Power Pistol			6.5	6.9	7.3	7.6	8.0	8.4	
Sport Pistol					6.2	6.5	6.9		
Herco					6.9	7.3	7.6		
N340						7.4	7.8		
True Blue							8.5	9.1	
A#5						9.2	9.7	10.2	
Auto Comp					7.5	7.8	8.2	8.6	
Silhouette			7.8	8.2	8.5	8.9	9.3	9.6	
A#7			9.9	10.4	10.9	11.3	11.8	12.2	
Energy Ft. Lbs		231	297	333	371	411	453	497	
Special Load	Powder	Grains	Velocity fps	Energy Ft. lb					
Accuracy Load	A#2	6.3	1000	411					
Hunting Load	Target	6.8	1100	497					


45 AUTO (ACP)

Bullet		Caliber	Weight	Type	C.O.A.L.				
	#8825	.4515"	200gr.	FPJ Match	1.155"				
	#9820	.4515"	200gr.	JHP V-Crown	1.210"				
Powder	Velocity	650	750	800	850	900	950	1000	
Clays				4.2	4.5	4.8	5.1		
Bullseye				4.6	5.0	5.3	5.6		
Target					4.8	5.2	5.6	6.0	
Tite Group				4.5	4.8	5.1	5.5		
American Select	4.2	4.7	5.0	5.2	5.5	5.7			
WST		4.5	4.8	5.2	5.5				
N320		5.0	5.2	5.5	5.8	6.1			
A#2	4.0	4.6	4.9	5.2	5.4				
Zip		5.5	5.8	6.1	6.4	6.8	7.1		
Win 231		5.2	5.5	5.9	6.2	6.5			
Unique		5.2	5.5	5.8	6.1	6.4			
Power Pistol			5.9	6.3	6.8	7.2	7.6		
Sport Pistol				5.3	5.6	6.0			
Herco						6.8	7.1		
WSF						6.3	6.7	7.0	
N340			6.5	7.2					
True Blue				6.7	7.2	7.6	8.0		
A#5					8.1	8.6	9.0		
Auto Comp				6.6	6.9	7.3	7.7		
Silhouette			7.1	7.4	7.7	8.0	8.4		
A#7					9.7	10.2	10.8		
Energy Ft. Lbs	188	250	284	321	360	401	444		
Special Load	Powder	Grains	Velocity fps	Energy Ft. lb					
Accuracy Load	N320	6.1	950	401					
Hunting Load	Target	6.0	1000	444					

45 AUTO (ACP)

Bullet		Caliber	Weight	Type	C.O.A.L.					
	#8805	.4515"	230gr.	JHP	1.210"					
	#8815	.4515"	230gr.	FMJ Match	1.270"					
Powder	Velocity	600	650	700	750	800	850	900		
Clays			3.7	3.9	4.2	4.5	4.7			
Bullseye				4.2	4.5	4.8	5.2			
Target						4.7	5.0	5.4		
Tite Group					4.3	4.6	4.9			
American Select				4.3	4.6	4.9				
WST		4.1	4.4	4.7	5.0					
N320					4.9	5.1				
Zip					5.4	5.7	6.1	6.4		
Win 231	4.3	4.6	4.9	5.2	5.5	5.8				
Unique				5.3	5.5	5.8				
Power Pistol				5.7	6.1	6.5	6.9			
Sport Pistol				4.8	5.1	5.4				
Herco					5.9	6.2	6.5			
WSF					5.6	5.9	6.2			
N340					5.9	6.1	6.4			
True Blue						6.8	7.2			
A#5						7.7	8.2			
Auto Comp						6.2	6.5	6.9		
Silhouette				6.4	6.7	7.1	7.4			
A#7						9.0	9.4			
Energy Ft. Lbs		184	216	250	287	327	369	414		
Special Load	Powder	Grains	Velocity fps	Energy Ft. lb						
Accuracy Load	Power Pistol	6.9	900	414						
Hunting Load	Target	5.4	900	414						

45 AUTO (ACP)

Bullet		Caliber	Weight	Type	C.O.A.L.				
	#8820	.4515"	240gr.	JHC	1.185"				
Powder	Velocity	600	650	700	750	800	850	900	
Clays			3.7	4.0	4.2				
Bullseye					4.5	4.8			
Target				4.2	4.5	4.9	5.2		
Tite Group					4.4	4.7			
American Select			4.1	4.3	4.6				
WST			3.9	4.2	4.5				
N320				4.6	4.9	5.2			
A#2			3.9	4.2					
Win 231					5.1	5.5			
Unique					5.0	5.3			
Power Pistol					5.6	6.0	6.4	6.8	
Sport Pistol					4.7	5.0			
Herco			4.7	5.1	5.4	5.7	6.0		
WSF			4.8	5.1	5.3	5.6	5.9		
N340	4.6	4.9	5.2	5.5	5.8	6.1			
True Blue				5.6	6.0	6.4	6.8		
A#5					6.7	7.2	7.6		
Auto Comp			5.0	5.3	5.7	6.0	6.3		
Silhouette							7.0	7.3	
A#7						8.6	9.0	9.5	
Energy Ft. Lbs		192	225	261	300	341	385	432	
Special Load	Powder	Grains	Velocity	fps	Energy	Ft. lb			
Accuracy Load	Sport Pistol	5.0	800		341				
Hunting Load	Power Pistol	6.8	900		432				